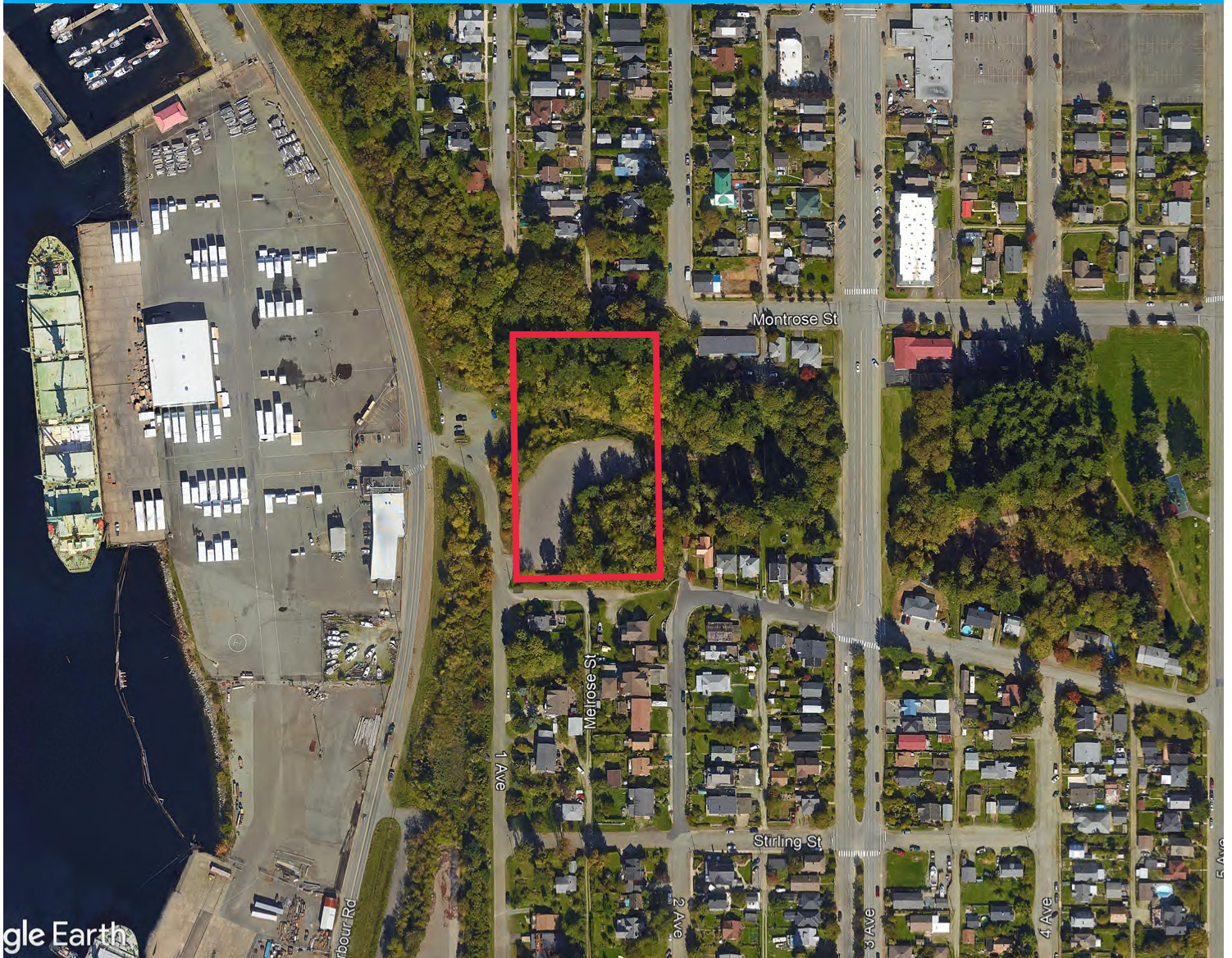


1st Avenue, Commercial

Couverdon

TOLL-FREE **1.877.239.4811** couverdon.com

PHOTOS, UPDATES & MORE  



Located a short distance from Harbour Quay Marina in an active industrial enclave. This property has good easy access and is a great opportunity for an owner/operator. Approximately 0.7 acres of the site is paved with security fencing already in place. The current zoning permits a large range of industrial uses. The property has excellent views of the Alberni Harbour.

PID	SIZE	PRICE	ZONING	ALR	AREA
005667879	2.77 Acres	\$425,000	Industrial	No	Port Alberni, 1 st Avenue