

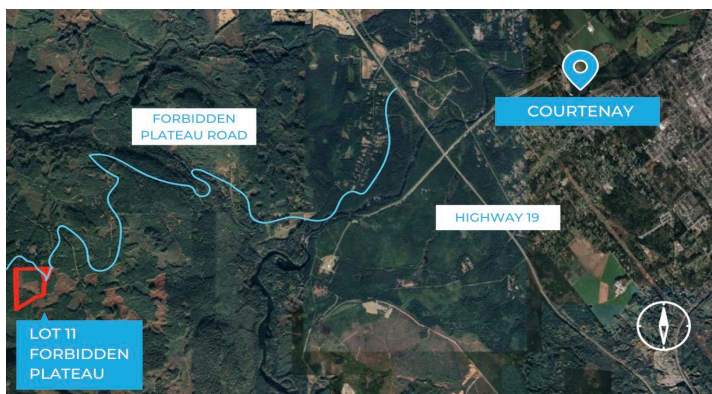
Lot 11 Forbidden Plateau

Couverdon
couverdon.com



contact: MATT SCHEIBEL, 250.591.4601

460 REALTY



Ideal for 2 single family homes, Lot 11 is easily accessible via Forbidden Plateau Road. This parcel offers outstanding ocean views overlooking Comox Harbour, snow-capped West Coast Mountains, and the Salish Sea.

Own your very own piece of wilderness where the smell of fresh country air, rugged terrain and spectacular views greet you each morning. Doorsteps from Wood Mountain Park and Strathcona Provincial Park, one of the oldest provincial parks in BC, Forbidden Plateau is in the heart of outdoor activities ideal for hiking, biking and skiing, yet still only a 35 min drive to Courtenay and Comox.

PID	SIZE	PRICE	ZONING	ALR	AREA
028-704-622	21,69 ha (53.6 acres)	\$859,000	R20	No	Comox Valley