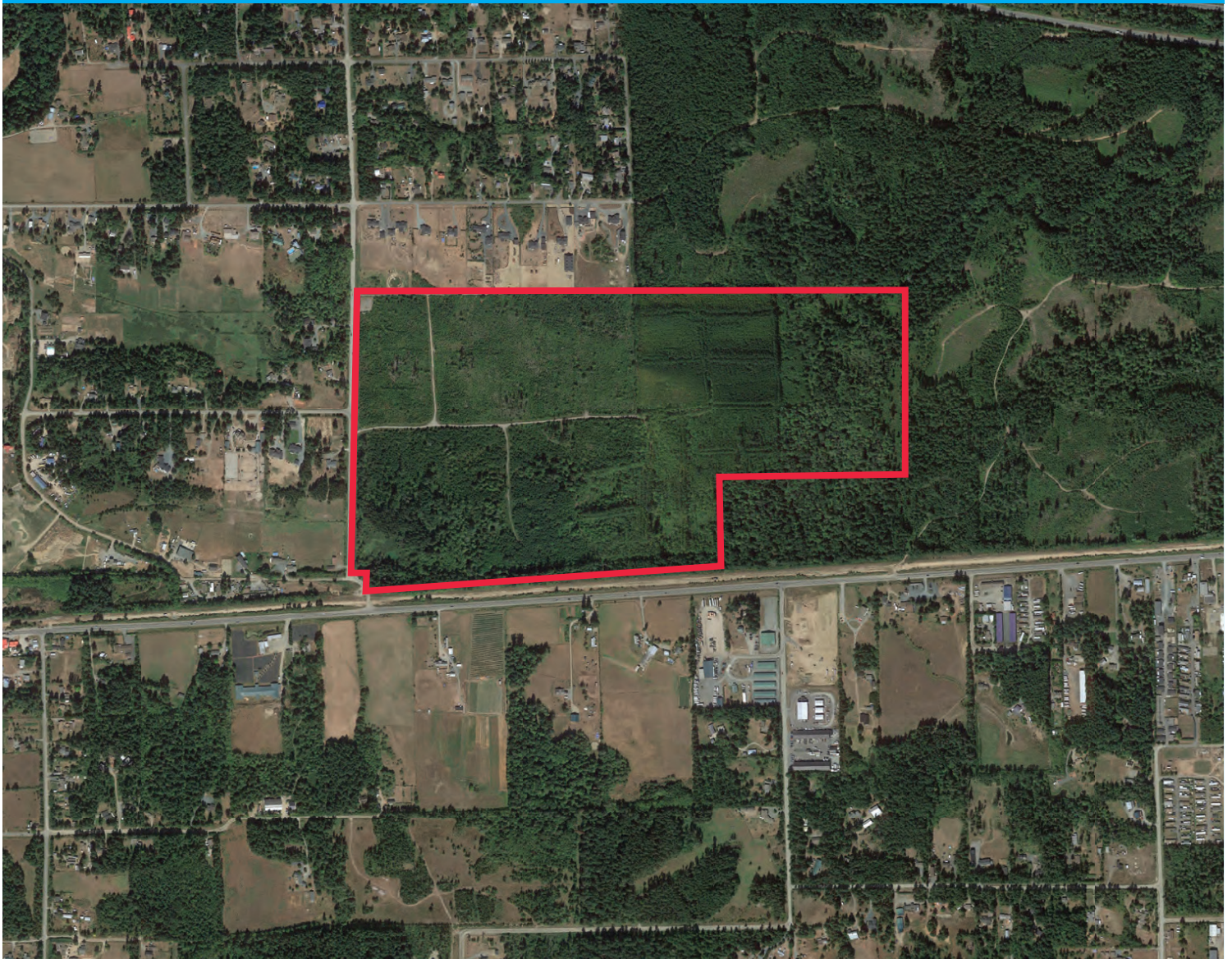


# Shawn Road

Couverdon

TOLL-FREE **1.877.239.4811** [couverdon.com](http://couverdon.com)

PHOTOS, UPDATES & MORE  



This 160 acre property is located off Shawn Road with over 750m of frontage on the Alberni Highway. It is 1.3km walking distance from the Coombs Market. The property is relatively flat and presents itself well for a variety of different opportunities. The property also benefits from the frontage onto the new railway trail constructed between Parksville and Coombs.

PID	SIZE	PRICE	ZONING	ALR	AREA
027599523	160 Acres	\$1,500,000	Agriculture	Split	Shawn Road Coombs