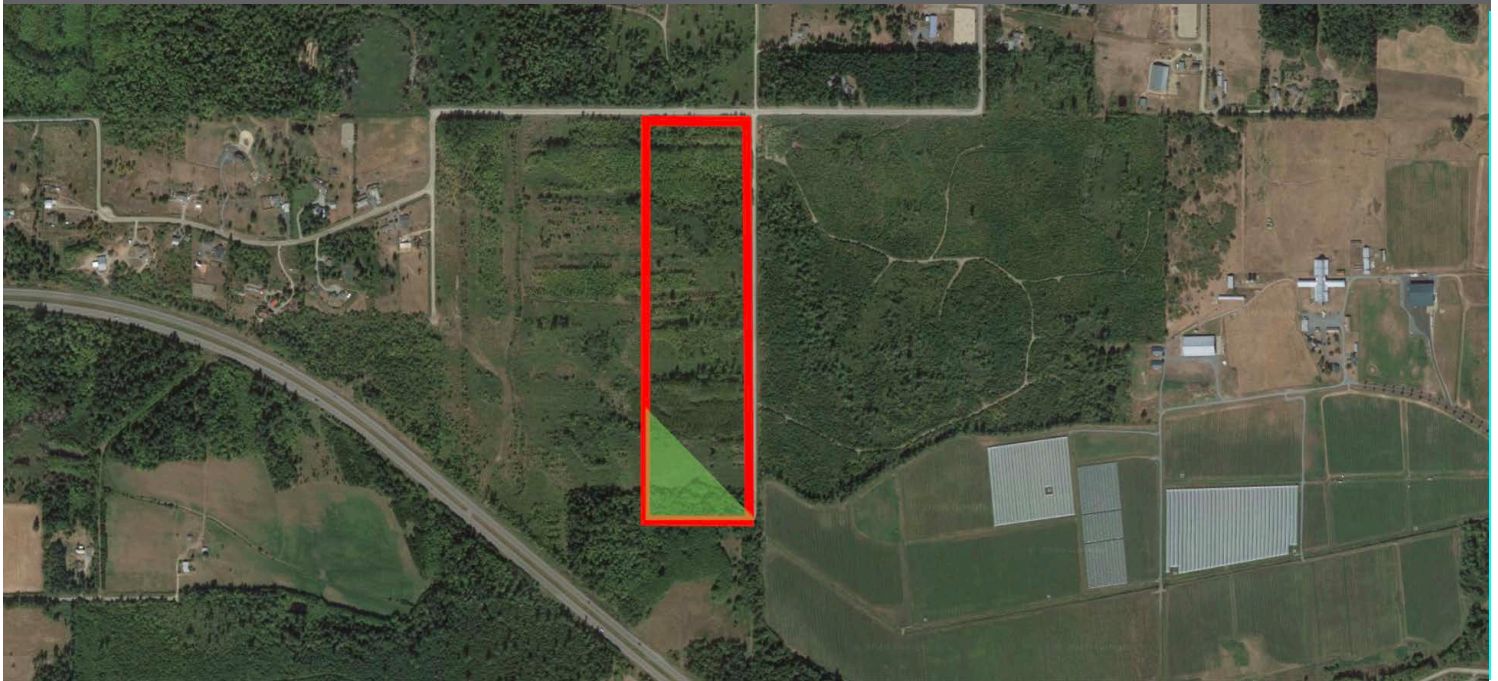


# Lot 14 Laburnum Road, Qualicum Beach

**Couverdon**

TOLL-FREE **1.877.239.4811** [couverdon.com](http://couverdon.com)

PHOTOS, UPDATES & MORE  



This property is located on Kaplar Road with frontage on Laburnum and is surrounded by rural acreages and farmland. It has excellent access to the highway and is approximately a 5 minute drive to Qualicum Beach where there is a lively shopping area and great beaches. The topography is generally flat and is serviced with Hydro and telephone. Approximately 9% of the property is in the ALR.

Qualicum Beach is a charming and quiet community that that boasts seaside ambiance and great Island character. The town of Parksville, also close by, is a popular tourist destination known for its sandy beaches and world class resorts and recreation. Both communities offer a number of shopping choices - from boutique finds to more well-known brands.

PID	SIZE	PRICE	ZONING	ALR	AREA
006-955-541	13.9 ha (34.3 acres)	\$979,000	FR-1 Forestry	Approx 9%	Qualicum Beach

 ALR