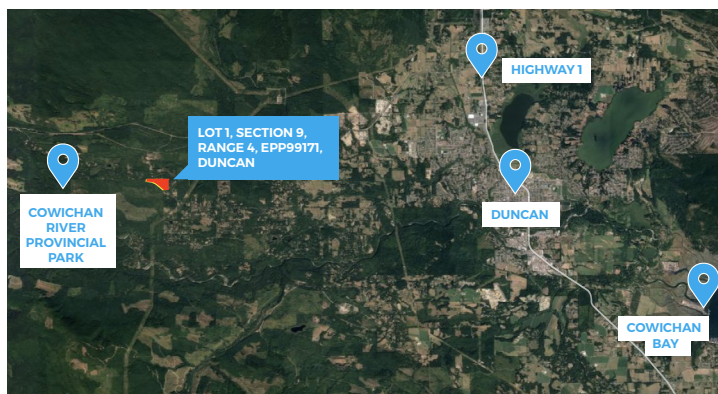
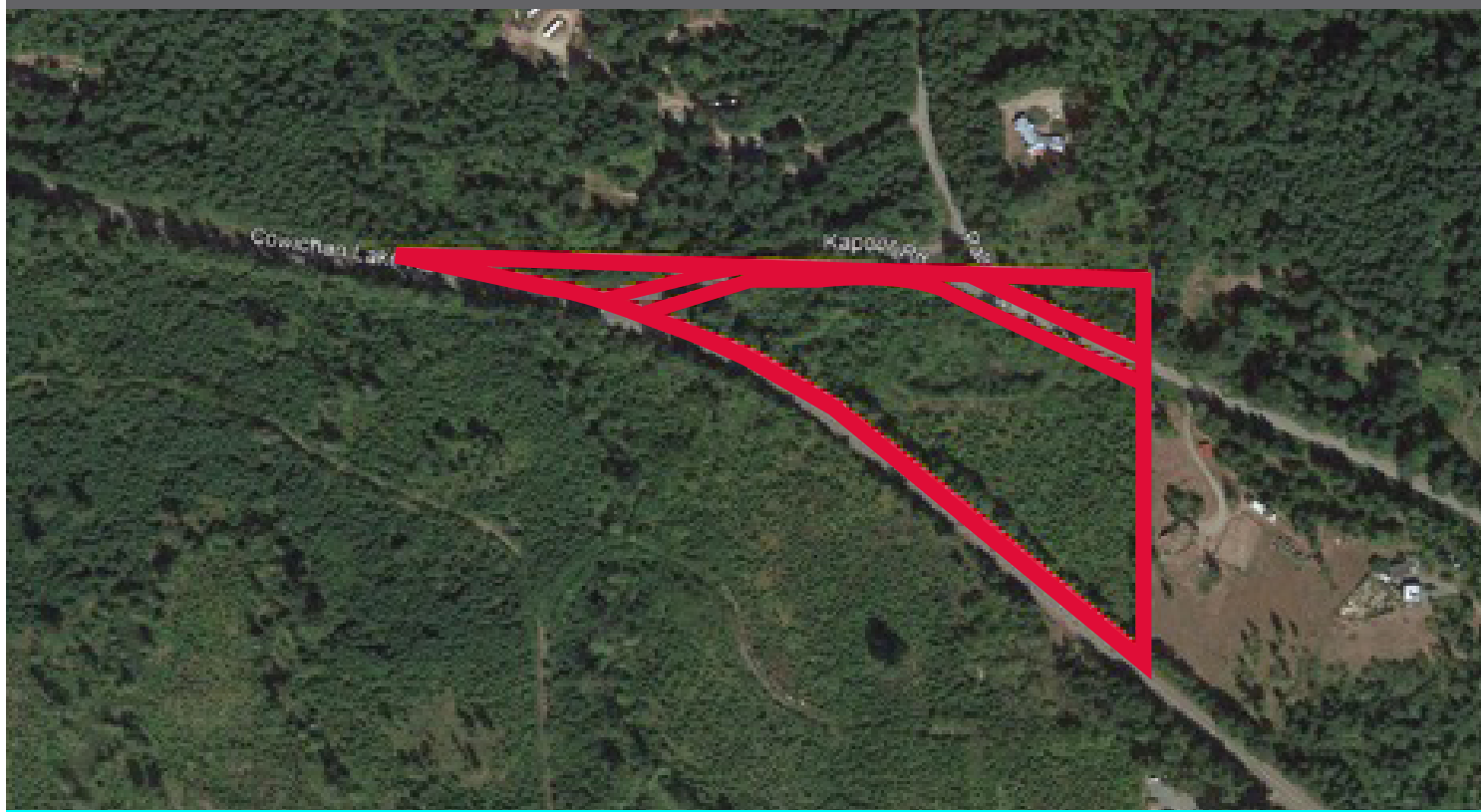


Lot 1 Cowichan Lake Road

Couverdon

TOLL-FREE **1.877.239.4811** couverdon.com

PHOTOS, UPDATES & MORE  



Recently subdivided, never been on the market before, this unique property fronts on to Cowichan Lake and Kapoor Roads in the Paldi area of the Cowichan Valley - just 2 minutes to the river and 10 minutes to the Lake. It is surrounded by rural acreage and farmland and includes a newly drilled well with flow estimated at 7 USgpm. Power is also available on the road making this an ideal homesteading acreage close to recreation and services (Duncan or Lake Cowichan).

Duncan is full of places to explore! It boasts 300 shops and services in a few beautiful walkable blocks. It is known for its 40 world renowned totem poles, celebrating its connection to First Nation culture. The town is just minutes from golf courses, wineries, lake and ocean waterfront, with a sophisticated trail network for hikers and cyclists.

| PID | SIZE | PRICE | ZONING | ALR | AREA |
|----------------|------------------------|-----------|-----------------------------|-----|--------|
| 031 045 839 | 2.65 ha (6.5 acres) | \$299,900 | F-1 Forestry Resource | No | Duncan |