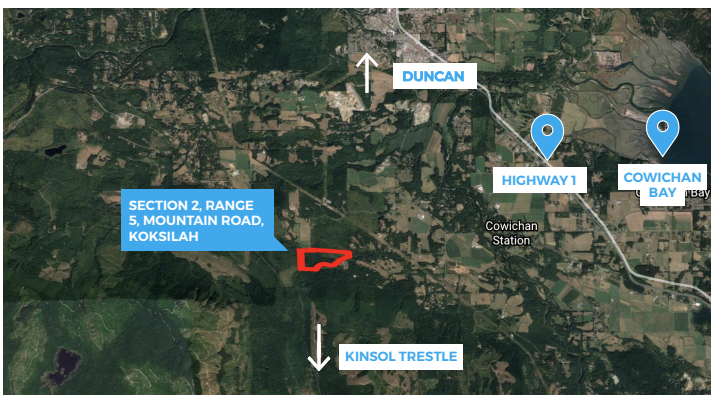


Sec. 2 Mountain Road

Couverdon

TOLL-FREE **1.877.239.4811** couverdon.com

PHOTOS, UPDATES & MORE  



This property is located on Mountain Road in the Cowichan Station area of the Cowichan Valley. Surrounded by rural acreages and farmland, it has good access from the Island Highway and is approximately a 15 minute drive to Duncan. The rolling topography is unimproved with varying age classes of timber growth, including some merchantable stands. This is an ideal homestead property, not too far removed from urban conveniences.

Nearby, Cowichan Bay is a dynamic village with shopping, dining, sailing and marine attractions. It has an active community supporting the arts and various local entrepreneurs creating signature services and products.

PID	SIZE	PRICE	ZONING	ALR	AREA
009 667 733	30 ha (74.2 acres)	\$1,015,000	Split A-1 F-1	Yes	Cowichan Bay