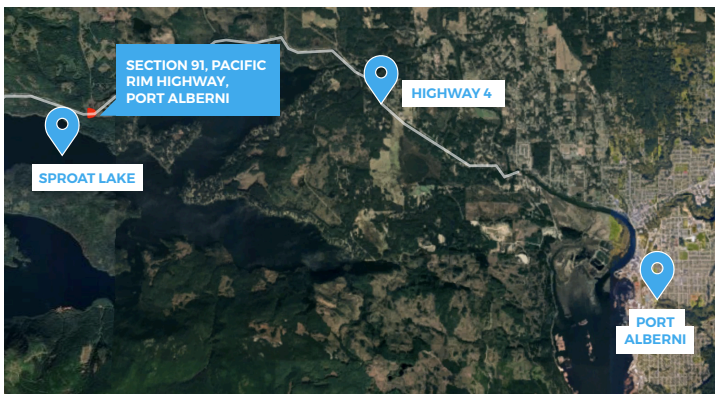


Sec. 91 Pacific Rim Hwy

Couverdon

TOLL-FREE **1.877.239.4811** couverdon.com

PHOTOS, UPDATES & MORE  



This unique property is located 1 km west of the Lakeshore Drive turn off on the Pacific Rim Highway at Sproat Lake, 15 kms west of Port Alberni. The property straddles the highway dividing it almost equally with flat topography providing easy access to both sides. Review the A-4 Forestry Reserve zoning to ensure it fits with your plans for the property.

PID	SIZE	PRICE	ZONING	ALR	AREA
009 390 006	0.8 ha (2 acres)	\$199,000	A-4 Forest Reserve	No	Port Alberni