



Couverdon

CONTACT

Tyler.schon@mosaicforests.com

For Rent

CHEMAINUS SHOP COMPOUND

9583 BARE POINT ROAD, CHEMAINUS

Chemainus Shop Compound

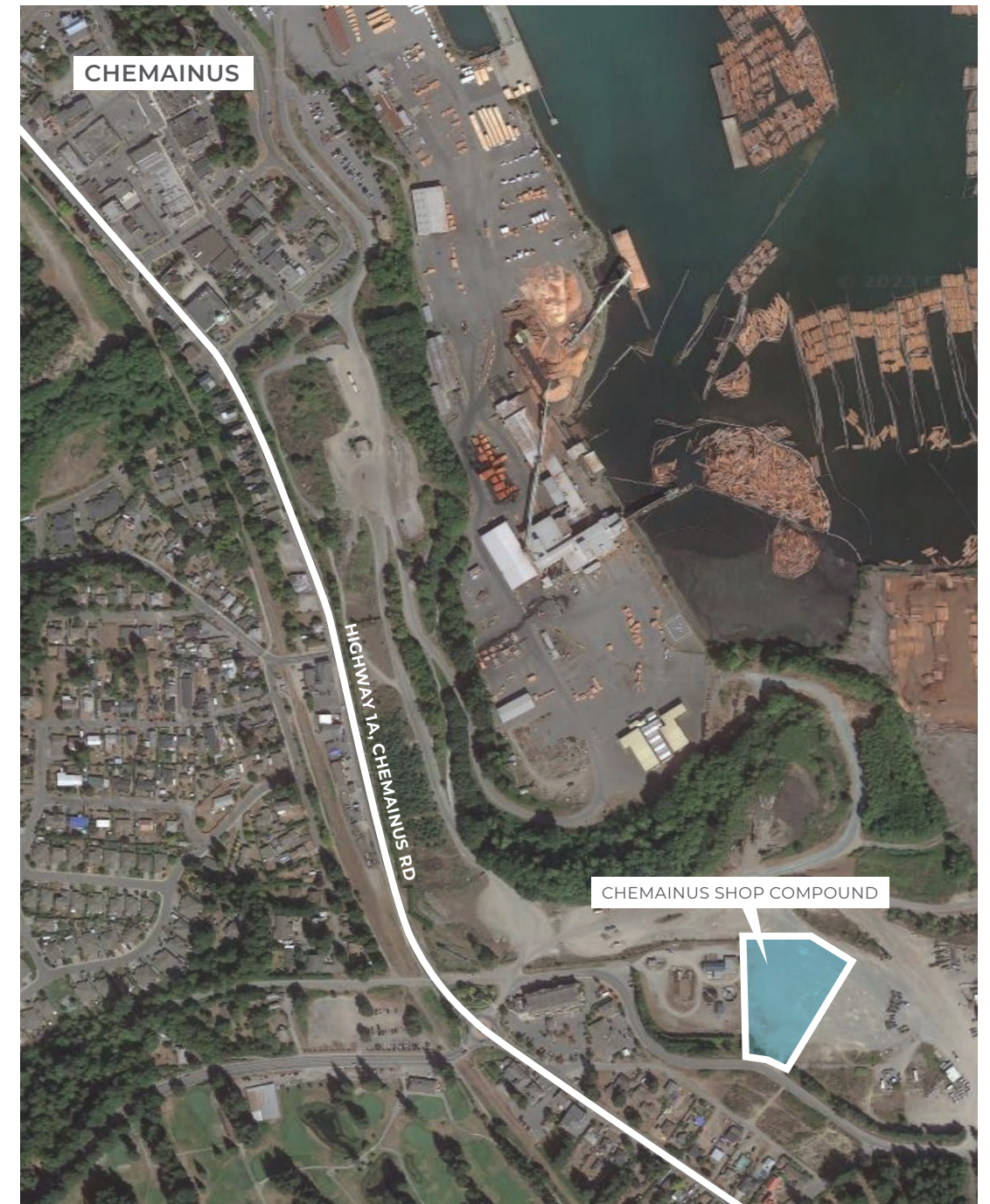


- 2.3 acres or 100,000 ft² fully fenced, flat, ease access, high utility yard
- Asking \$10,400/month plus proportional share of property taxes
- Zoning: Heavy Industrial (I2). See the attached Zoning bylaw for further detail
- Adjacent to other heavy industrial uses in South Chemainus
- Direct Access off Bare Point Road
- 3 minutes from the services of downtown Chemainus
- 5 mins from the Island Hwy (major transportation corridor)
- Currently no hydro, water, or sewer. Service, (could be arranged if required)

Zoning: HEAVY INDUSTRIAL (A-4)

77 (1) THE PERMITTED USES FOR THE I2 ZONE ARE AS FOLLOWS:

- All Industrial Light Zone (I1)
- Permitted Uses Automobile Wrecking or Salvage Yard Bulk Storage of Flammable and Combustible Liquids
- Boat Terminals and Dock
- Cannabis Production
- Facility Helicopter Landing Pad
- Mobile Food Service
- Municipal/Regional Government Offices Pier, Wharf, and Related Facility
- Private Airplane Landing Strip
- Railway Yard
- Recycling Industrial Use
- Sawmills, Pulpmills, and Planing Mills
- Slaughterhouse
- Temporary Mobile Home (subject to the Temporary Mobile Home Permit Bylaw)
- Works Yard [BL2996, BL3000, BL3457, BL3467, BL3512, BL3657, BL3741, BL3754]



Couverdon

CONTACT

Tyler.schon@mosaicforests.com